

CAMILLE SOFA



The Camille sofa is the perfect mix of Scandinavian and mid-century aesthetics.

Its fully integrated back and foam seat cushions make it a very low maintenance sofa. The range includes several sofa sizes, ottomans and an armchair.

OPTIONS:

Custom sizes & finishes are available.
Please contact us for details.

MATERIALS & FINISHES:

Hardwood and plywood frame with high resilience and luxura foams.

Upholstery: A range of upholstery is available

American oak timber feet:



Clear

Powdercoated metal feet:



Black



White

DIMENSIONS:

Armchair

L:1050 x W:850 x H: 800mm

2.0 seater (shown image)

L:1700 x W:850 x H: 800mm

2.5 seater

L:2000 x W:850 x H: 800mm

3.0 seater

L:2350 x W:850 x H: 800mm

Small ottoman

L:750 x W:750 x H: 420mm

Large ottoman

L:1050 x W:750 x H: 420mm

CAMILLE SOFA

FABRIC SELECTION

TAYLOR

Composition: 100% Polyester.



Aloy



Frost Gray



Fossil



Surf



Olive



Coastal



Mushroom



Auburn

HUSK

Composition: 37% viscose, 24% polyester, 21% cotton, 18% linen



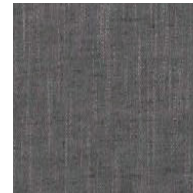
Ice



Cloud



Cement



Steel



Amalfi



Ocean



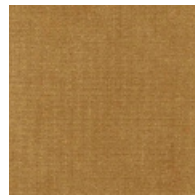
Polo

VELVET

Composition: 92% Polyester, 5% Cotton, 3% Latex.



Rose



Gold



Quartz



Linen



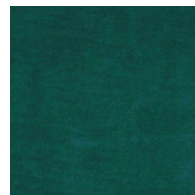
Minx



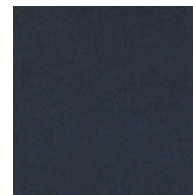
Concrete



Graphite



Forest



Navy

** Custom fabrics or COM (customer's own materials) are available to trade only.

CAMILLE SOFA

FABRIC SELECTION

HERRINGBONE

Composition: 68% linen, 26% wool, 6% Viscose



Quartz



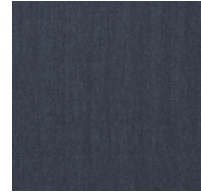
Pepper



Charcoal



Glacier



Indigo



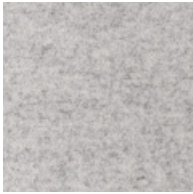
Riverstone



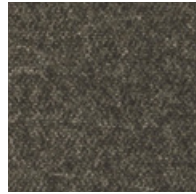
Jute

NATURE

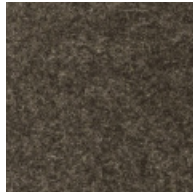
Composition: 80% wool, 20% polyamide



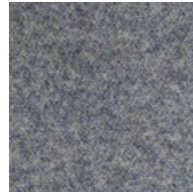
Frost Grey



Pirate Black



Ebony



Ashley Blue



Insignia Blue



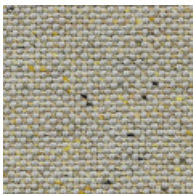
Laurel Wreath



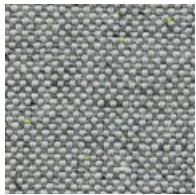
Wheat

CALIBRE

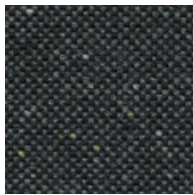
Composition: 82% Australian wool, 18% nylon



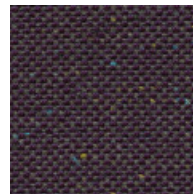
Distinction



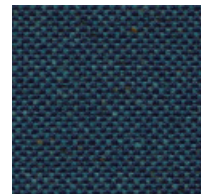
Integrity



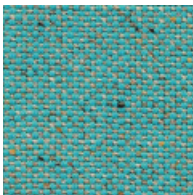
Elite



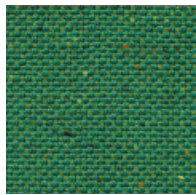
Grade



Icon



Virtue



Fine

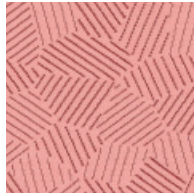
** Custom fabrics or COM (customer's own materials) are available to trade only.

CAMILLE SOFA

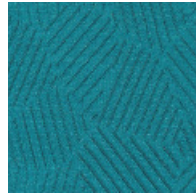
FABRIC & LEATHER SELECTION

RAZZLE DAZZLE

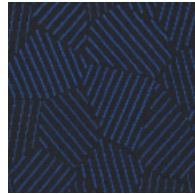
Composition: 60% wool, 20% polyamide, 20% polyester



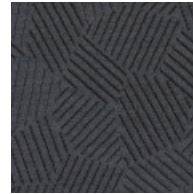
Blossom



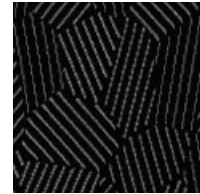
Petrol



Midnight



Graphite



Base



Graphite

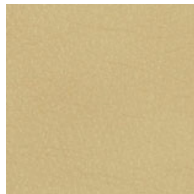


Base

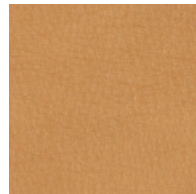
LEATHER OPTIONS

LEATHER I

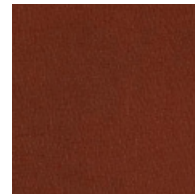
Type: Supple semi-aniline leather with a slight grain texture. Source: Italy



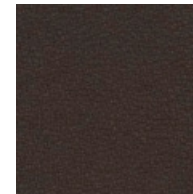
Stone



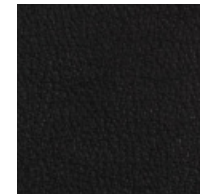
Camel



Toffee



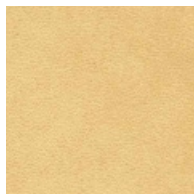
Coffee



Black

LEATHER II

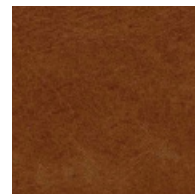
Type: A pure-aniline leather with a beautiful lustre. Certified low-VOC. Source: Germany



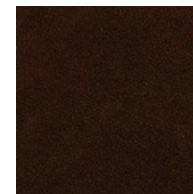
Parchment



Walnut



Chestnut



Bronze



Blackbutt

** Custom fabrics or COM (customer's own materials) are available to trade only.